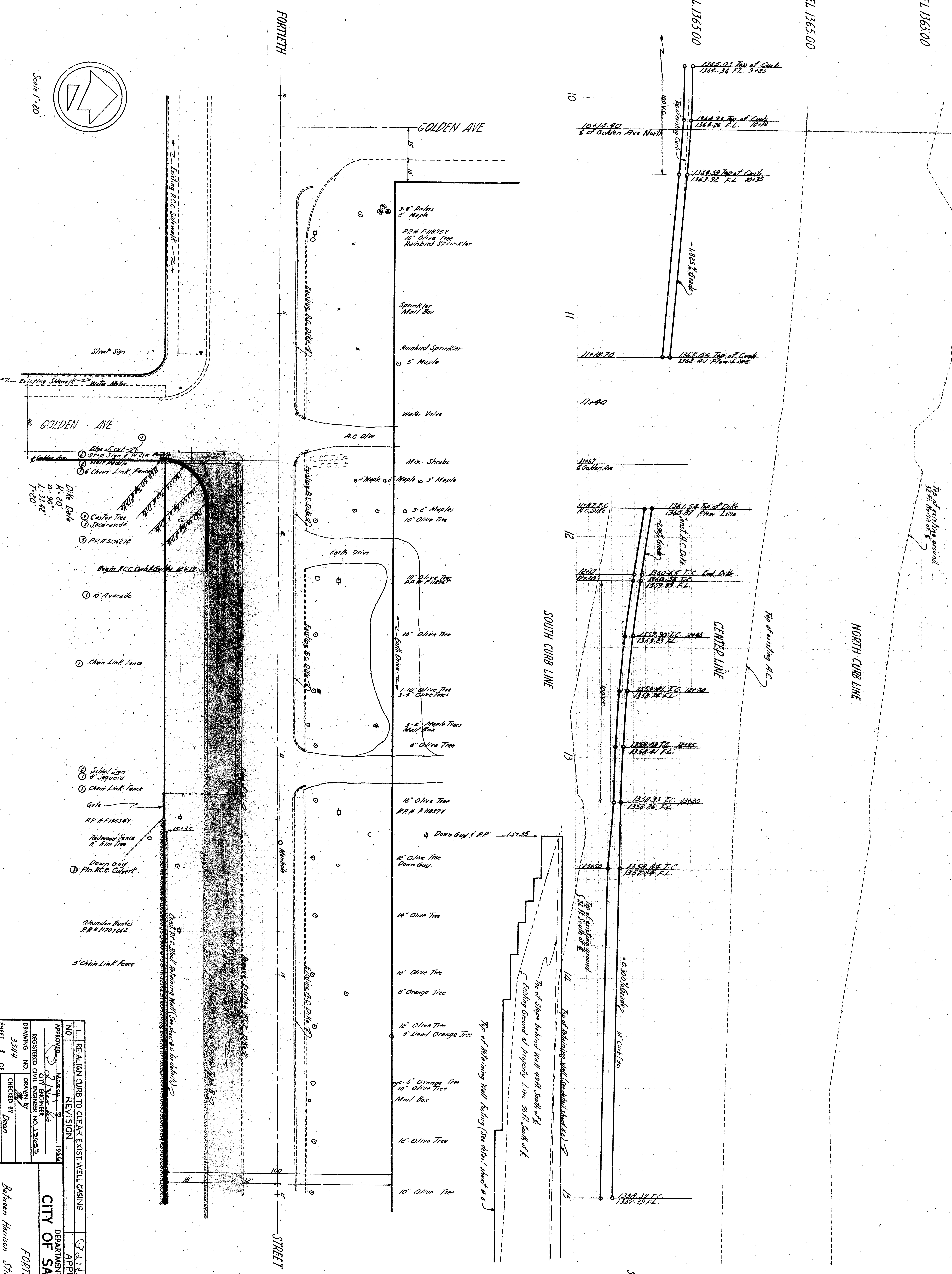


Scale 1"=20'

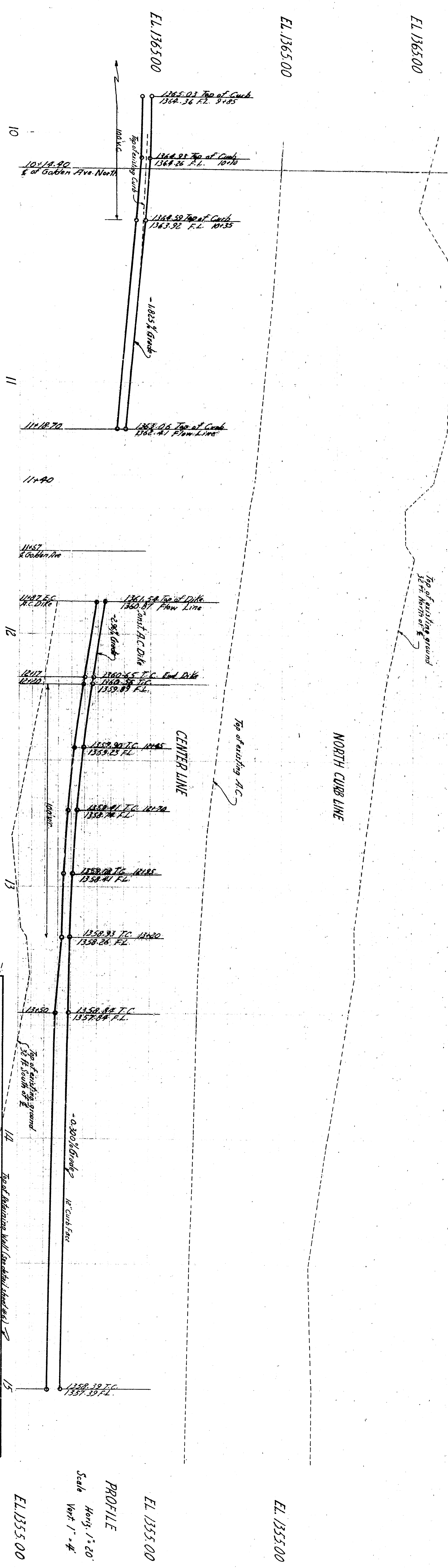


- 1. Stop Sign
- 2. Stop Sign
- 3. Chain Link Fence
- 4. Chain Link Fence
- 5. Chain Link Fence
- 6. Chain Link Fence
- 7. Chain Link Fence
- 8. Chain Link Fence
- 9. Chain Link Fence
- 10. Chain Link Fence
- 11. Chain Link Fence
- 12. Chain Link Fence
- 13. Chain Link Fence
- 14. Chain Link Fence
- 15. Chain Link Fence
- 16. Chain Link Fence
- 17. Chain Link Fence
- 18. Chain Link Fence
- 19. Chain Link Fence
- 20. Chain Link Fence

NO.	1	RE-ALIGN CURB TO CLEAR EXISTING WELL CASING
APPROVED		REVISION
REGISTERED CIVIL ENGINEER NO.	135425	
DRAWING NO.	3344	CHECKED BY
SHEET 3 OF 6		RECOMMENDED

CITY OF SAN BERNARDINO
 DEPARTMENT OF ENGINEERING
 FORTIETH STREET
 Between Harrison Street and Mountain Avenue
 Milburg

MAY 5, 1926
 DATE



PROFILE
 Scale
 Horz. 1"=20'
 Vert. 1"=4'

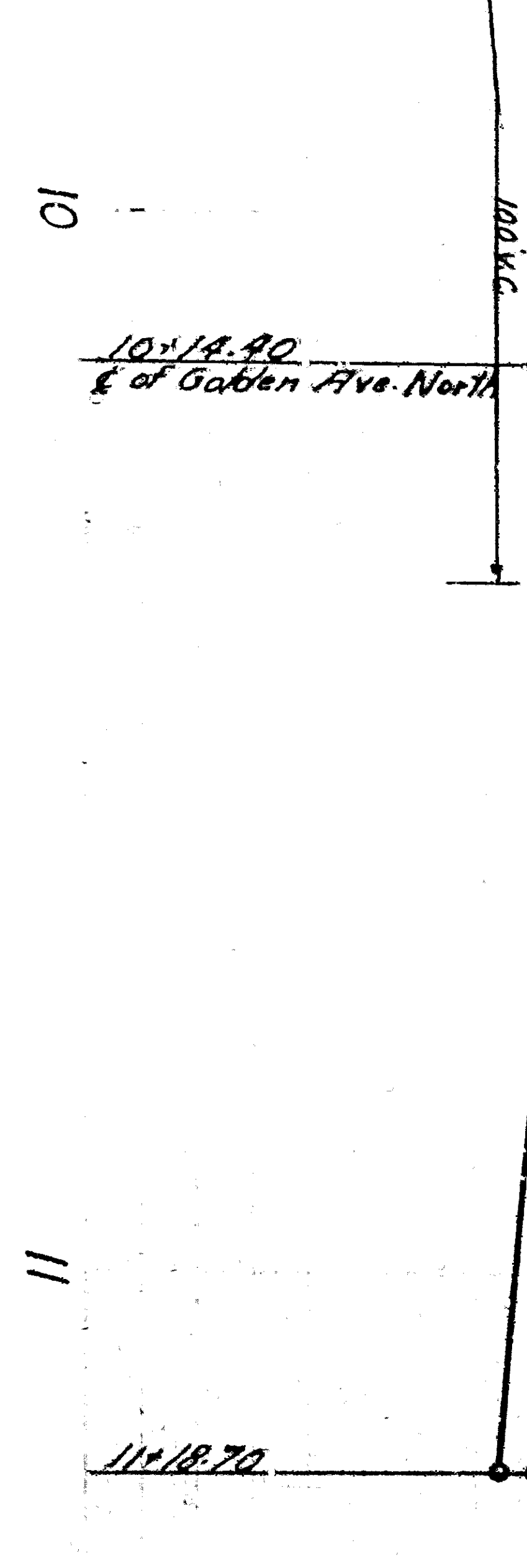
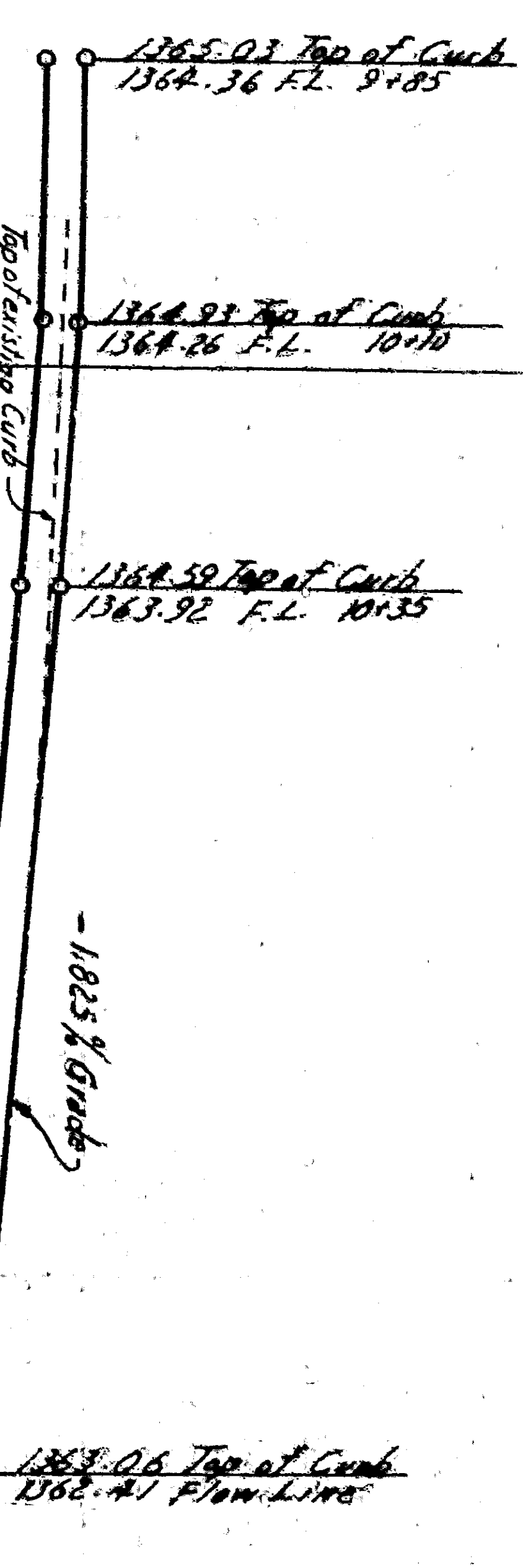
EL. 1365.00

EL. 1365.00

EL. 1365.00

Top of existing ground

NORTH CURB LINE

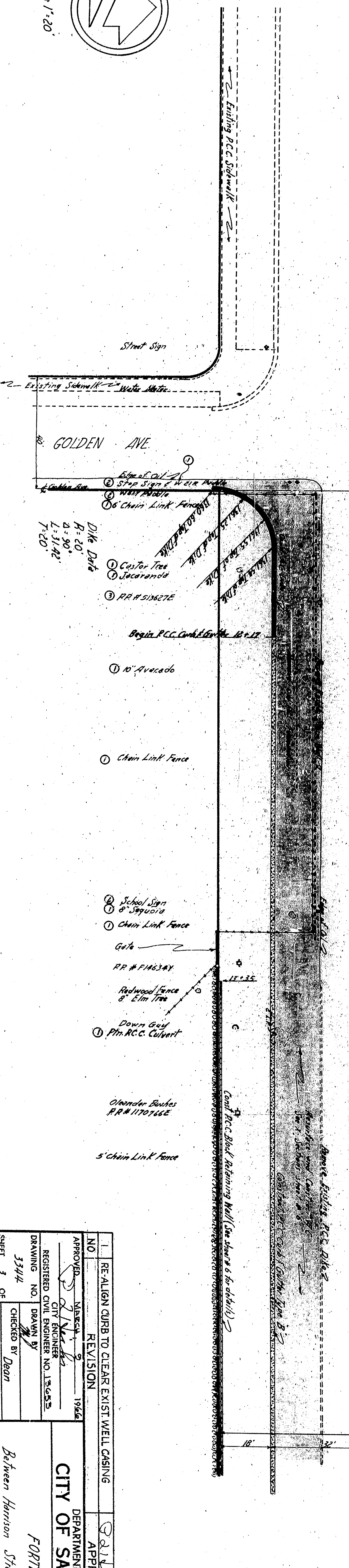
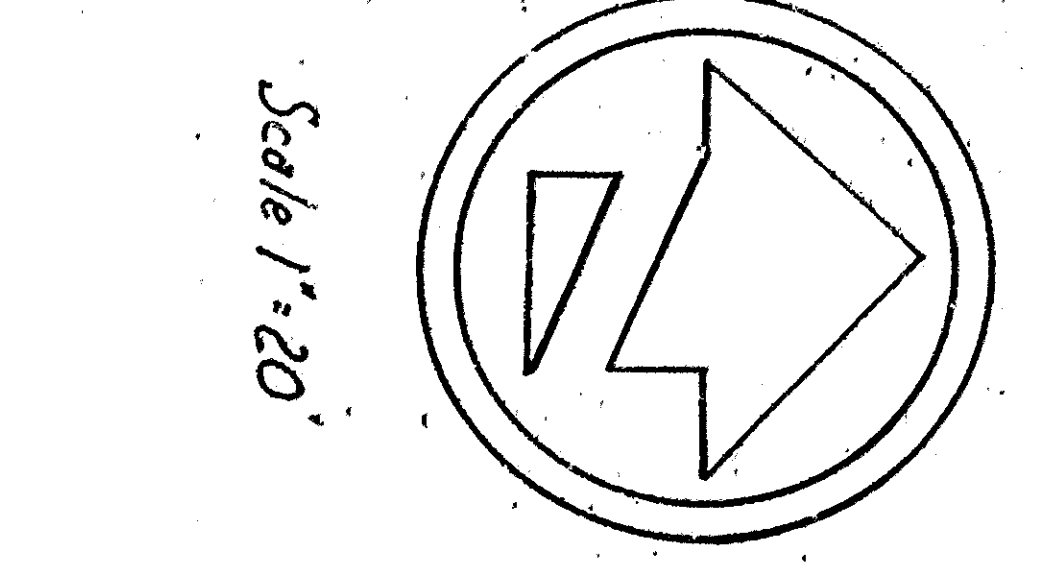


SOUTH CURB LINE

GOLDEN AVE

FORTIETH

STREET



PROFILE
Scale
Vert. 1" = 4'
Horiz. 1" = 20'

EL. 1355.00

EL. 1355.00

EL. 1355.00

NO.	1	RE-ALIGN CURB TO CLEAR EXIST WELL CASING	APPROVED	DATE	MAY 5, 1966
REVISION	1		APPROVAL		
CITY OF SAN BERNARDINO					
DEPARTMENT OF ENGINEERING					
FORTIETH STREET					
Between Harrison Street and Mountain Avenue					
Milburg					

DRAWING NO.	3344
CHECKED BY	Don
DATE	
RECOMMENDED	
SHEET	3 OF 6 SHEETS